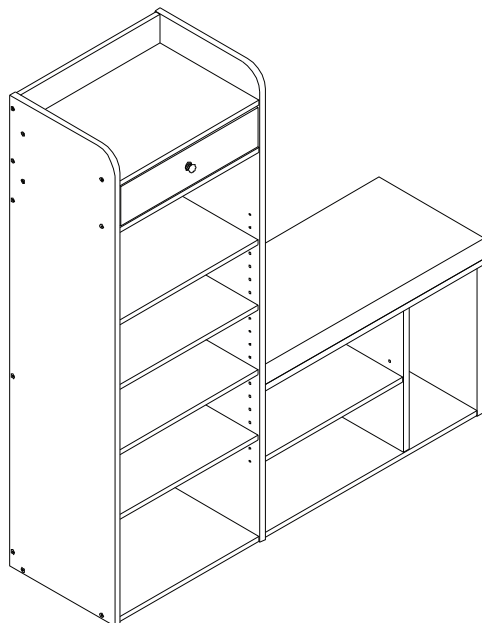


# ASSEMBLY INSTRUCTIONS

## MODEL #SR 6741: SHOE RACK












### NOTE TO CUSTOMERS:

- For ease and speed of assembly we recommend that before you commence each step of the assembly that you identify all the parts required to complete that step.
- We recommend that where possible you allow sufficient space to assemble the item as close as possible to the place where it will be once assembled.
- For the protection of your furniture we recommend that the product is placed on a dry, soft, smooth and clean surfaces during assembly to prevent any damage. Avoid damp and direct sunlight.
- During assembly do not over tighten the screws or bolts, as this may damage the product.
- Please ensure you retain all the product packaging until the item is completely assembled.
- Periodically check all fitting and re-tighten as necessary.
- Never allow any liquids to remain on your furniture as absorption can cause the wood to warp or finish to de-laminate.
- It is recommended that this item should be assembled by two adults.

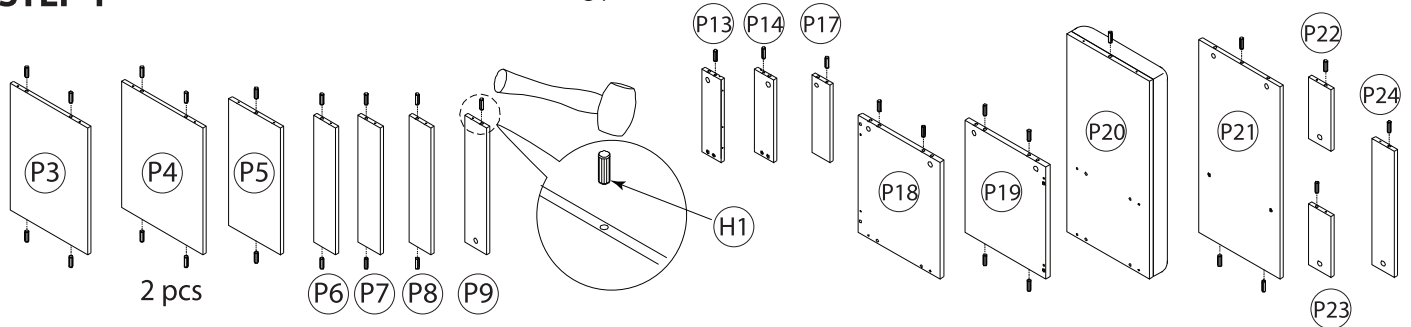
## PARTS IDENTIFICATION

<div>P1</div> <div>Quantity: 1</div> <div></div> <div>Long Vertical Panel (left)</div>	<div>P2</div> <div>Quantity: 1</div> <div></div> <div>Long Vertical Panel (middle)</div>	<div>P3</div> <div>Quantity: 1</div> <div></div> <div>Top Panel</div>		
<div>P4</div> <div>Quantity: 2</div> <div></div> <div>Base panel</div>	<div>P5</div> <div>Quantity: 1</div> <div></div> <div>Upper Back Panel</div>	<div>P6</div> <div>Quantity: 1</div> <div></div> <div>Upper Back Rail</div>	<div>P7</div> <div>Quantity: 1</div> <div></div> <div>Middle Back Rail</div>	<div>P8</div> <div>Quantity: 1</div> <div></div> <div>Lower Back Rail</div>
<div>P9</div> <div>Quantity: 1</div> <div></div> <div>Middle Lower Back Rail</div>	<div>P10</div> <div>Quantity: 4</div> <div></div> <div>Shelf Panel (left)</div>	<div>P11</div> <div>Quantity: 1</div> <div></div> <div>Shelf Panel (center)</div>	<div>P12</div> <div>Quantity: 1</div> <div></div> <div>Drawer Front Panel</div>	<div>P13</div> <div>Quantity: 1</div> <div></div> <div>Drawer Left Panel</div>
<div>P14</div> <div>Quantity: 1</div> <div></div> <div>Drawer Right Panel</div>	<div>P15</div> <div>Quantity: 1</div> <div></div> <div>Drawer Back Panel</div>	<div>P16</div> <div>Quantity: 1</div> <div></div> <div>Drawer Bottom</div>	<div>P17</div> <div>Quantity: 1</div> <div></div> <div>Drawer Support Bar</div>	<div>P18</div> <div>Quantity: 1</div> <div></div> <div>Side Panel (right)</div>
<div>P19</div> <div>Quantity: 1</div> <div></div> <div>Divider Panel</div>	<div>P20</div> <div>Quantity: 1</div> <div></div> <div>Seat Panel with Seat Cushion</div>	<div>P21</div> <div>Quantity: 1</div> <div></div> <div>Base Panel</div>	<div>P22</div> <div>Quantity: 1</div> <div></div> <div>Right Upper Back Rail</div>	<div>P23</div> <div>Quantity: 1</div> <div></div> <div>Right Lower Back Rail</div>
<div>P24</div> <div>Quantity: 1</div> <div></div> <div>Middle Upper Back Rail</div>	<div>Tools required:</div> <div><div></div><div>MALLET</div></div> <div><div></div><div>HOUSEHOLD SCREWDRIVER</div></div>			
<div><div></div><div>This item requires two adult persons to assemble it</div></div>				

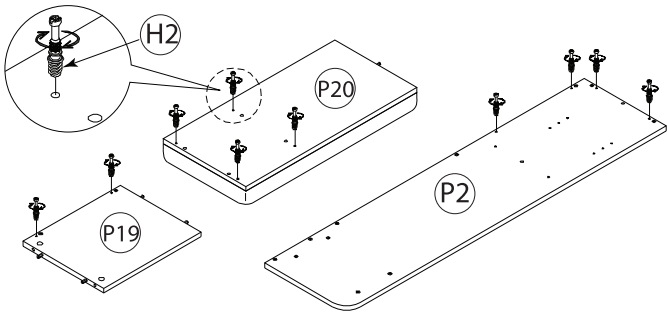
## HARDWARE LIST

<p>H1 Wooden Dowel M6 x 25 Ø 15/64" 1"</p> <p>Quantity: 37 pcs</p>	<p>H2 Connecting Bolts</p>  <p>Quantity: 13 pcs</p>	<p>H3 Cam Lock 15 x 9.5mm</p>  <p>Quantity: 10 pcs</p>	<p>H4 Cam Lock 12 x 9.5mm</p>  <p>Quantity: 3 pcs</p>	<p>H5 Screw M4 x 12. 15/32" Ø 5/32"</p> <p>Quantity: 12 pcs</p>
<p>H6 Drawer slide</p>  <p>Quantity: 1 set</p>	<p>H7 Screw #9 x 1 1/2" 1 1/2" Ø 11/64"</p> <p>Quantity: 38 pcs</p>	<p>H8 Shelf support pin</p>  <p>Quantity: 20 pcs</p>	<p>H9 Drawer Pull</p>  <p>Quantity: 1 pc</p>	<p>H10 Screw Pan Head for Pull #6 x 16.5 41/64" Ø 9/64"</p> <p>Quantity: 1 pc</p>
<p>H11 Colored Sticker</p>  <p>Quantity: 25 pcs</p>	<p>H12 Anti-tip web strip</p>  <p>Quantity: 2 pcs</p>	<p>H13 Screw for anti-tip M3.5 x 12 5/32" Ø 9/64"</p> <p>Quantity: 2 pcs</p>	<p>H14 Screw for mount to wall #6 x 1 1/4" 1 1/4" Ø 9/64"</p> <p>Quantity: 2 pcs</p>	<p>H15 Wall plug for Screw H14</p>  <p>Quantity: 2 pcs</p>

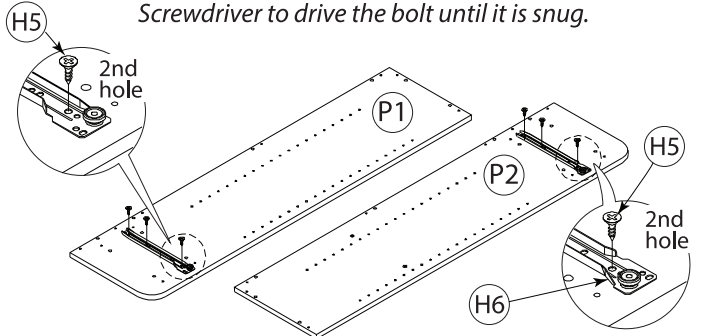
## STEP 1 Insert wooden dowels (H1) into the following parts.



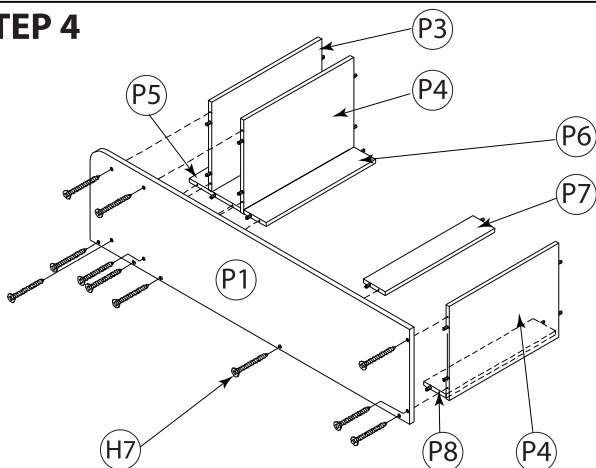
## STEP 2 Align the Connecting Bolt (H2), use a household Philip Screwdriver to drive the bolt until it is snug.



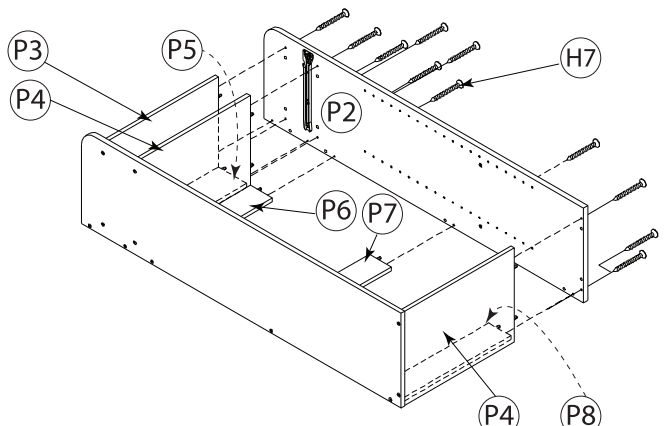
## STEP 3 Install a part of the Drawer Slide (H6), to the Long Vertical Panel (P1) & (P2), use a household Philip Screwdriver to drive the bolt until it is snug.



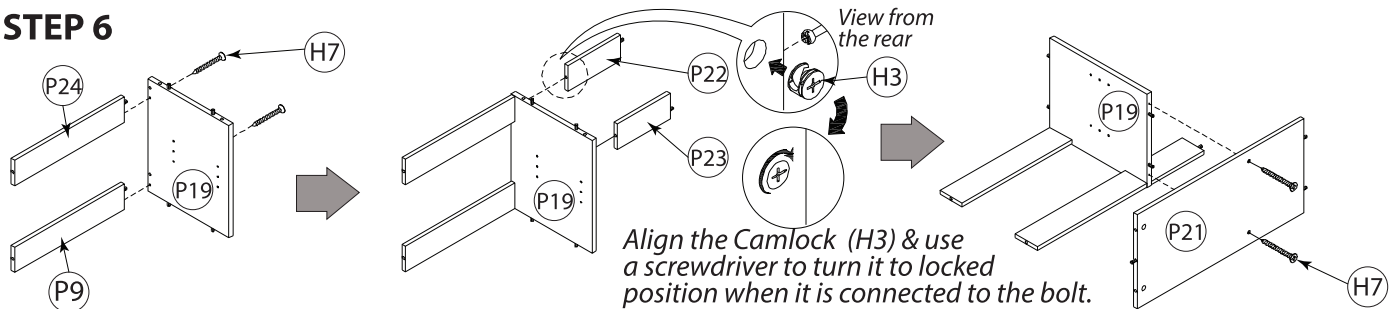
## STEP 4



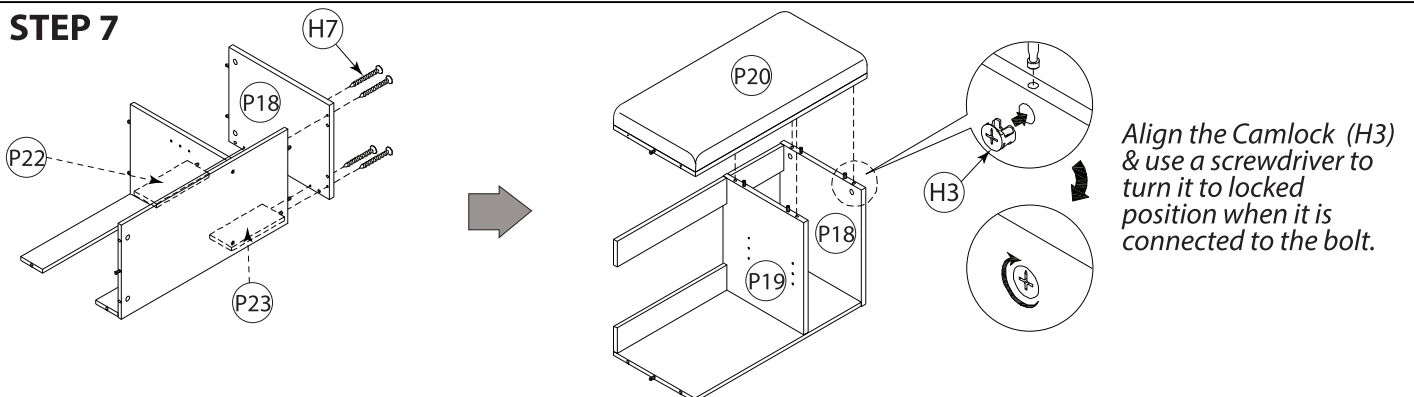
## STEP 5



## STEP 6



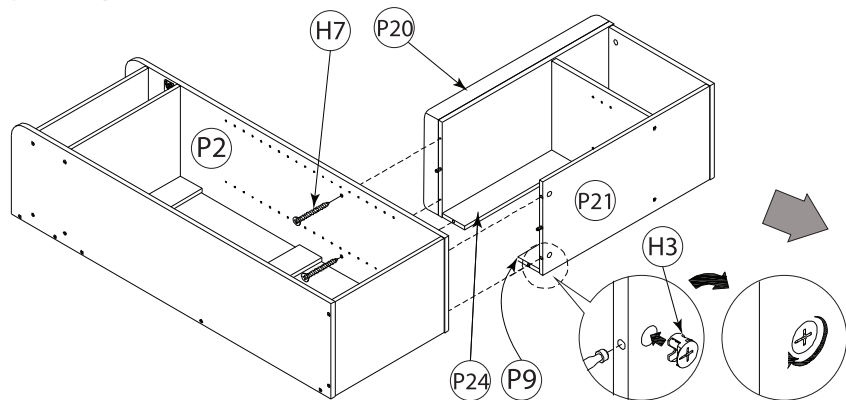
## STEP 7



# ASSEMBLY INSTRUCTIONS

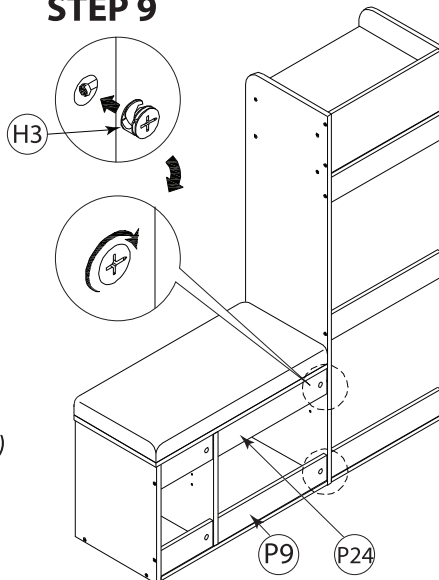
## ITEM #SR 6741: SHOE RACK

## STEP 8

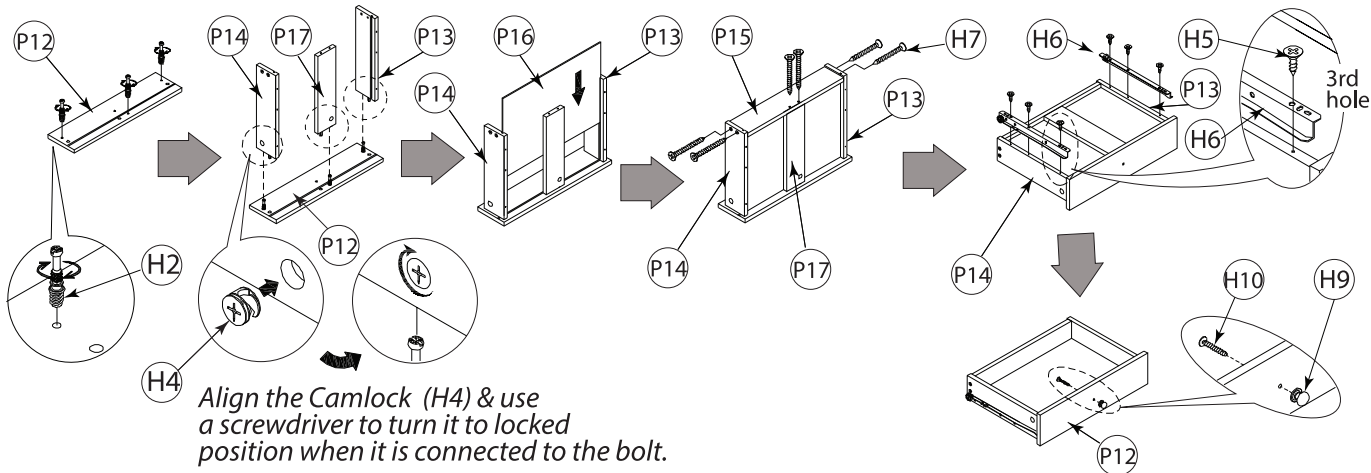


*Align the Camlock (H3) & use a screwdriver to turn it to locked position when it is connected to the bolt.*

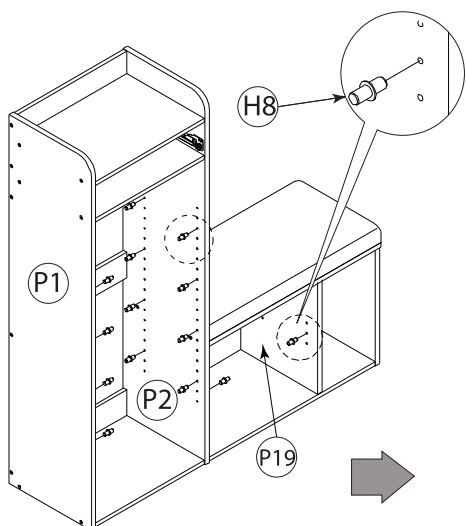
## STEP 9



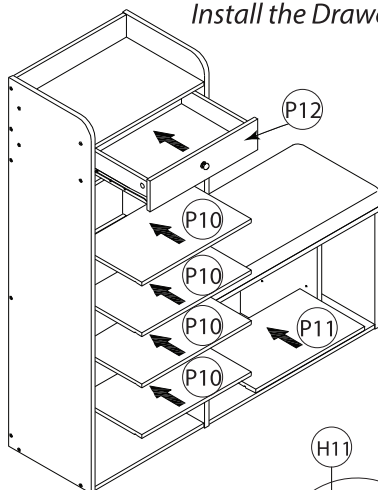
## STEP 10 *Assemble the Drawer*



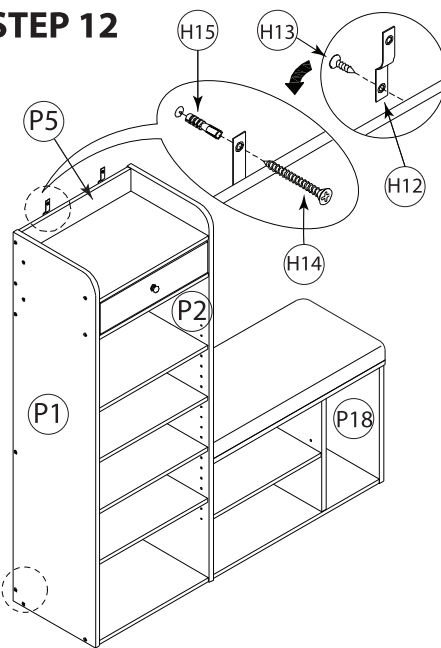
## STEP 11



Place all the  
Shelve Panels  
(P10) & (P11).  
Install the Drawer



## STEP 12



Use the provided stickers (H11) to cover the screw holes.

## IMPORTANT!

**ANCHOR THE UNIT TO THE WALL TO AVOID TIPPING.  
PLACE THE HEAVIEST ITEMS IN THE LOWEST SHELVES.  
NEVER ALLOW CHILDREN TO STAND OR CLIMB ON THE UNIT.**

## THE USE OF TIP-OVER RESTRAINTS MAY ONLY REDUCE, BUT NOT ELIMINATE, THE RISK OF TIP-OVER