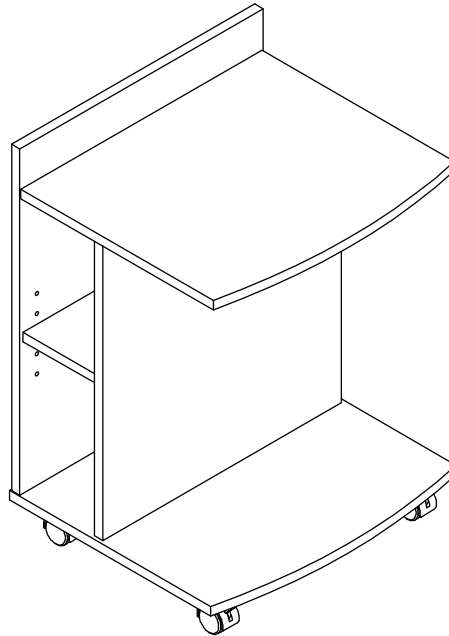


ASSEMBLY INSTRUCTIONS

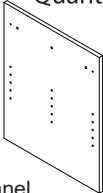
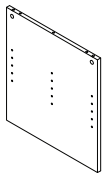
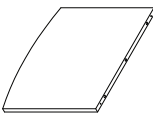
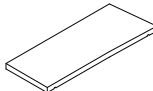
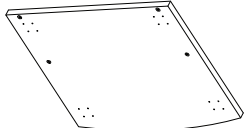
MODEL : #MR1725- MAGAZINE RACK



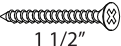
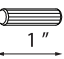



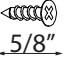




NOTE TO CUSTOMERS:

- For ease and speed of assembly we recommend that before you commence each step of the assembly that you identify all the parts required to complete that step.
- We recommend that where possible you allow sufficient space to assemble the item as close as possible to the place where it will be once assembled.
- For the protection of your furniture we recommend that the product is placed on a dry, soft, smooth and clean surfaces during assembly to prevent any damage. Avoid damp and direct sunlight.
- During assembly do not over tighten the screws or bolts, as this may damage the product.
- Please ensure you retain all the product packaging until the item is completely assembled.
- Periodically check all fitting and re-tighten as necessary.
- Never allow any liquids to remain on your furniture as absorption can cause the wood to warp or finish to de-laminate.
- It is recommended that this item should be assembled by two adults.

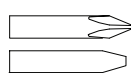
PARTS IDENTIFICATION

P1 Quantity: 1  Back Panel	P2 Quantity: 1  Front Panel	P3 Quantity: 1  Top Shelf Panel	P4 Quantity: 1  Adjustable Shelf Panel	P5 Quantity: 1  Base Panel
--	---	---	--	--

HARDWARE LIST

H1 Screw #9 x 1 1/2"  Quantity: 6 pcs	H2 Wooden Dowel M8 x 25 Ø5/16" 1"  Quantity: 12 pcs	H3 Connecting Bolt  Quantity: 2 pcs	H4 Cam Lock 15/12.5mm  Quantity: 2 pcs	H5 Shelf Support Pin  Quantity: 6 pcs
H6 Screw m3.5 x 16mm Ø 9/64" 5/8"  Quantity: 16 pcs	H7 Castor with Lock  Quantity: 2 pcs	H8 Castor without Lock  Quantity: 2 pcs	H9 Sticker  Quantity: 2 pcs	Glue  Quantity: 1 pc

TOOLS REQUIRED

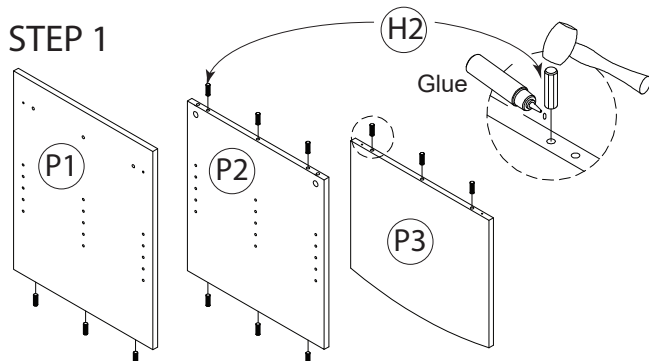


SCREW DRIVER

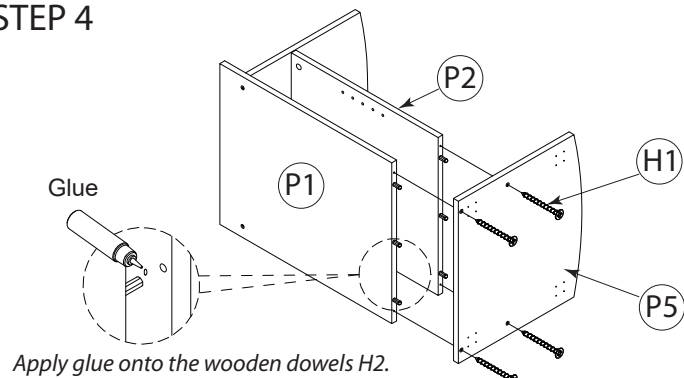


MALLET

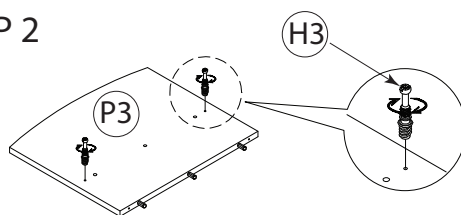
STEP 1



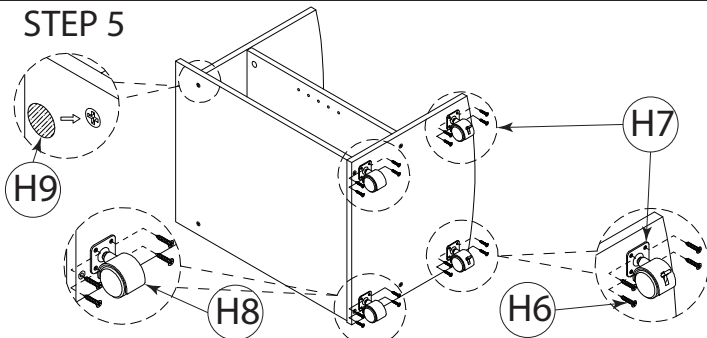
STEP 4



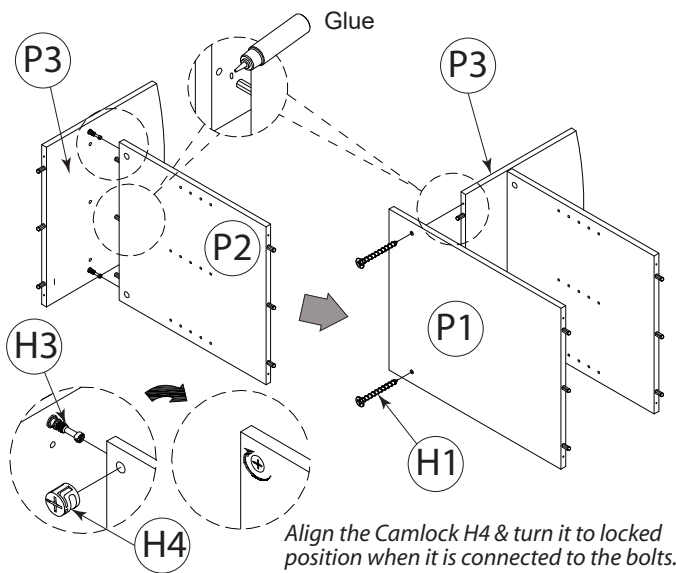
STEP 2



STEP 5



STEP 3



STEP 6

