

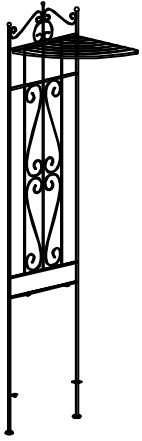
# ASSEMBLY INSTRUCTIONS

Style # M02 Corner Hallway Bench



It is recommended that this item should be assembled by two adults.

# Part List



A 1PC  
Side frame



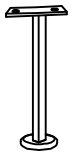
B 1PC  
Side frame



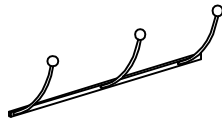
C 1PC  
Bottom shelf



D 1PC  
Seat frame



E 1PC  
Support leg



F 2PCS  
Hanger



G 1PC  
Cushion

# Hardware List



B1 4PCS



B2 14PCS



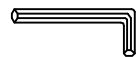
B3 4PCS



B4 2sets

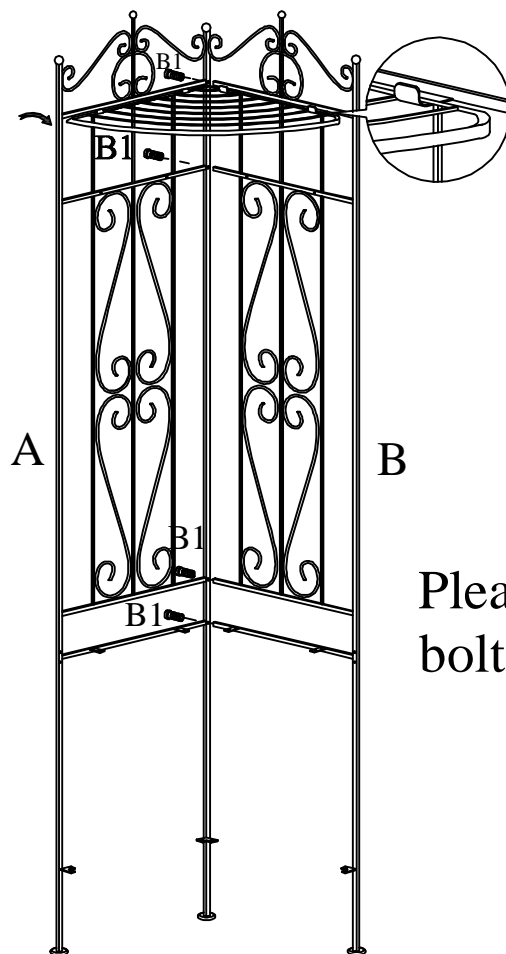


B5 2sets



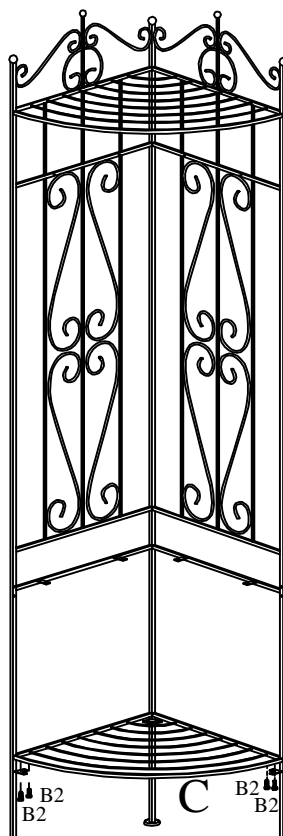
Allen Wrench

## STEP 1



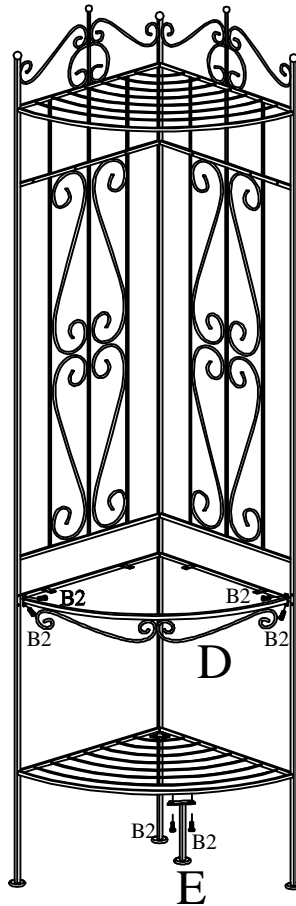
Please do not tighten bolts B1 until step 5.

## STEP 2



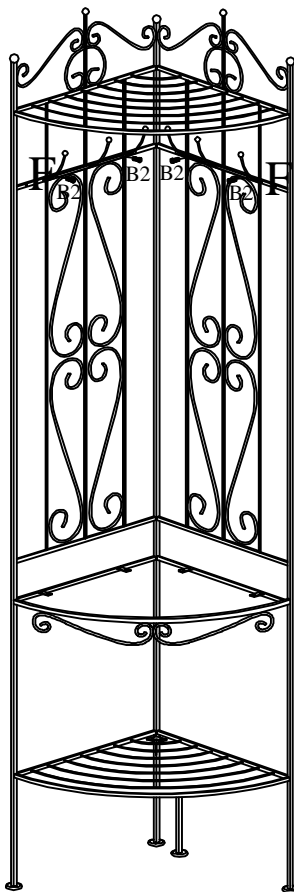
Please do not tighten bolts B2 until step 5.

### STEP 3

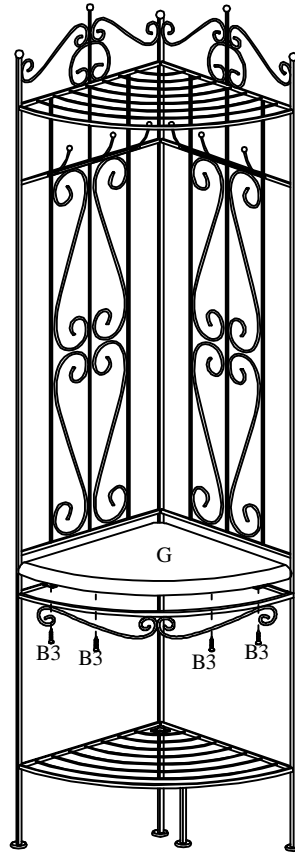


Please do not tighten bolts B2 until step 5.

### STEP 4

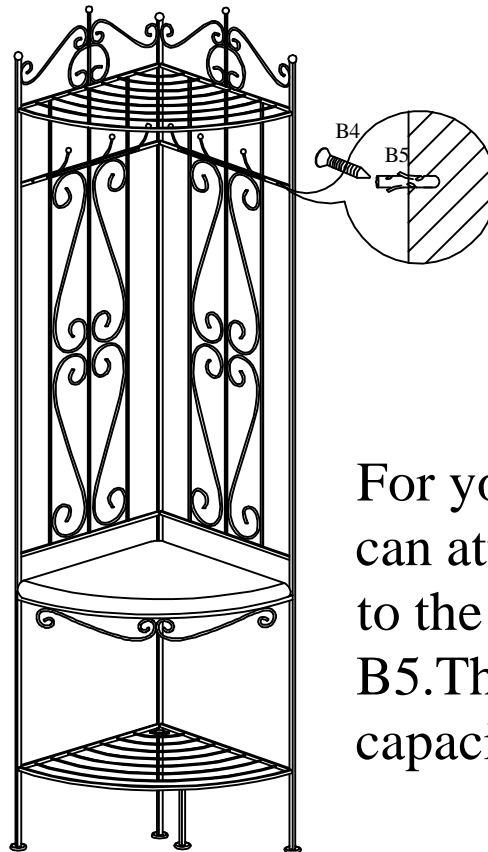


## STEP 5



Please tighten bolts B1 & B2, screw B3 at this point.

## STEP 6



For your safety, you can attach this unit to the wall with B4 & B5. The weight capacity is 250lbs.