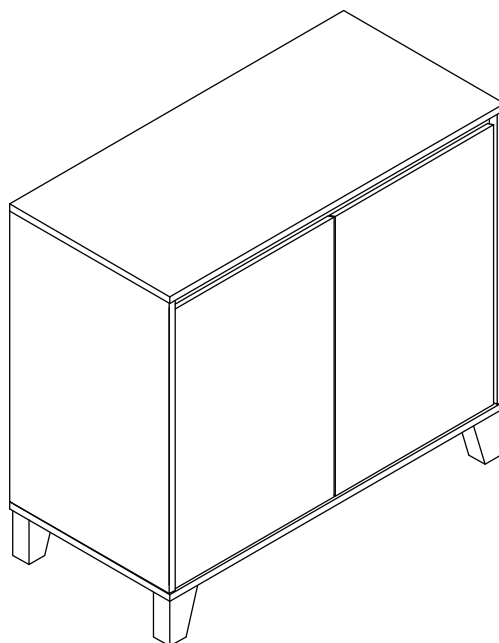


# ASSEMBLY INSTRUCTIONS

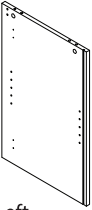
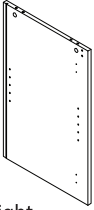
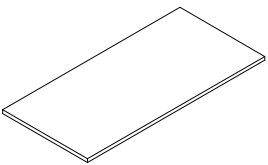
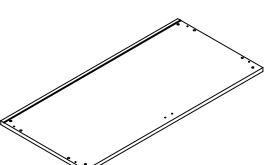
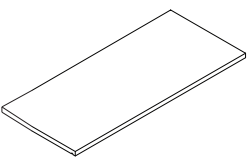
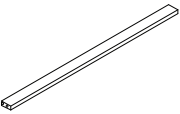
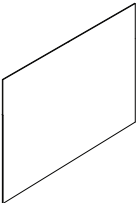
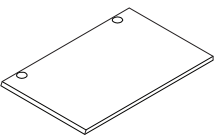
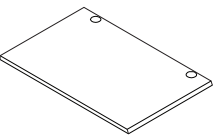

## MODEL #C 6383 CONSOLE TABLE



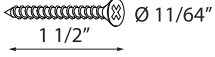
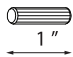
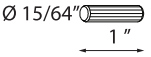
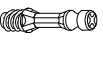

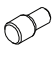
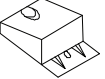
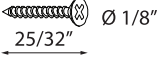

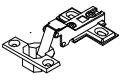
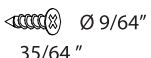
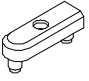
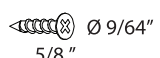
### NOTE TO CUSTOMERS:

- For ease and speed of assembly we recommend that before you commence each step of the assembly that you identify all the parts required to complete that step.
- We recommend that where possible you allow sufficient space to assemble the item as close as possible to the place where it will be once assembled.
- For the protection of your furniture we recommend that the product is placed on a dry, soft, smooth and clean surfaces during assembly to prevent any damage. Avoid damp and direct sunlight.
- During assembly do not over tighten the screws or bolts, as this may damage the product.
- Please ensure you retain all the product packaging until the item is completely assembled.
- Periodically check all fitting and re-tighten as necessary.
- Never allow any liquids to remain on your furniture as absorption can cause the wood to warp or finish to de-laminate.
- It is recommended that this item should be assembled by two adults.

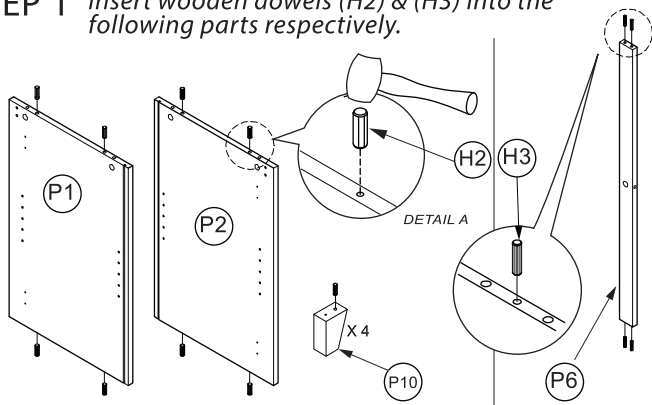
## PARTS IDENTIFICATION

|   |  |  |  |  |
|---|--|--|--|--|
| <b>P1</b> Quantity: 1<br><br>Side Panel-Left | <b>P2</b> Quantity: 1<br><br>Side Panel-Right | <b>P3</b> Quantity: 1<br><br>Top Panel        | <b>P4</b> Quantity: 1<br><br>Bottom Panel      | <b>P5</b> Quantity: 1<br><br>Adjustable shelf |
| <b>P6</b> Quantity: 1<br><br>Front rail      | <b>P7</b> Quantity: 1<br><br>Back panel       | <b>P8</b> Quantity: 1<br><br>Door panel- Left | <b>P9</b> Quantity: 1<br><br>Door panel- Right | <b>P10</b> Quantity: 4<br><br>Leg             |

## HARDWARE LIST

|   |   |  |   |  |
|---|---|--|---|--|
| <b>H1</b> Screw #9 x 1 1/2"<br><br>Quantity: 8 pcs     | <b>H2</b> Wooden Dowel m8 x 25mm<br><br>Quantity: 12 pcs | <b>H3</b> Wooden Dowel m6 x 25mm<br><br>Quantity: 4 pcs | <b>H4</b> Connecting Bolts<br><br>Quantity: 5 pcs          | <b>H5</b> Cam Lock 15/12.5mm<br><br>Quantity: 5 pcs |
| <b>H6</b> Shelf Support<br><br>Quantity: 4 pcs        | <b>H7</b> Corner Wedges<br><br>Quantity: 6 pcs          | <b>H8</b> Screw m3 x 20mm<br><br>Quantity: 6 pcs       | <b>H9</b> Adhesived shelf stopper<br><br>Quantity: 4 pcs | <b>H10</b> Door Hinges<br><br>Quantity: 4 sets     |
| <b>H11</b> Screw m3.5 x 14mm<br><br>Quantity: 16 pcs | <b>H12</b> Door stopper<br><br>Quantity: 1 pc          | <b>H13</b> Screw m3.5 x 16mm<br><br>Quantity: 1 pc    |   |  |

**STEP 1** insert wooden dowels (H2) & (H3) into the following parts respectively.

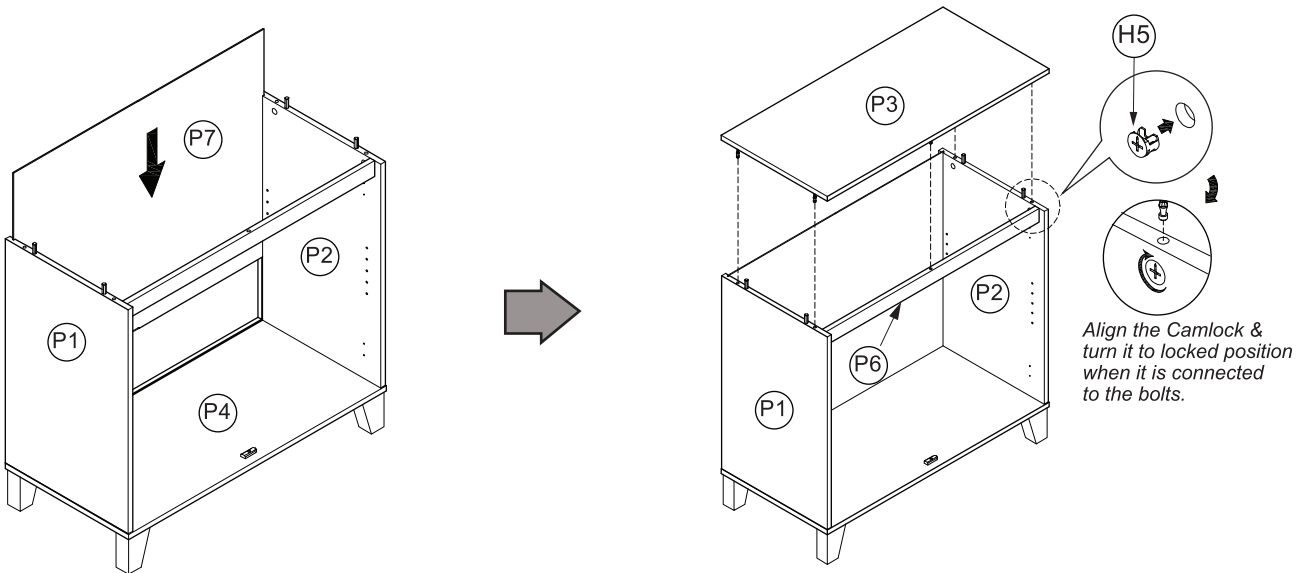


**STEP 2** install the hardware into the following parts respectively.

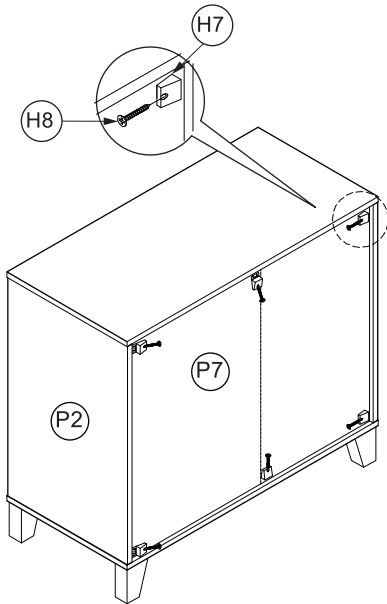
**STEP 3**

PAGE 2 OF 3

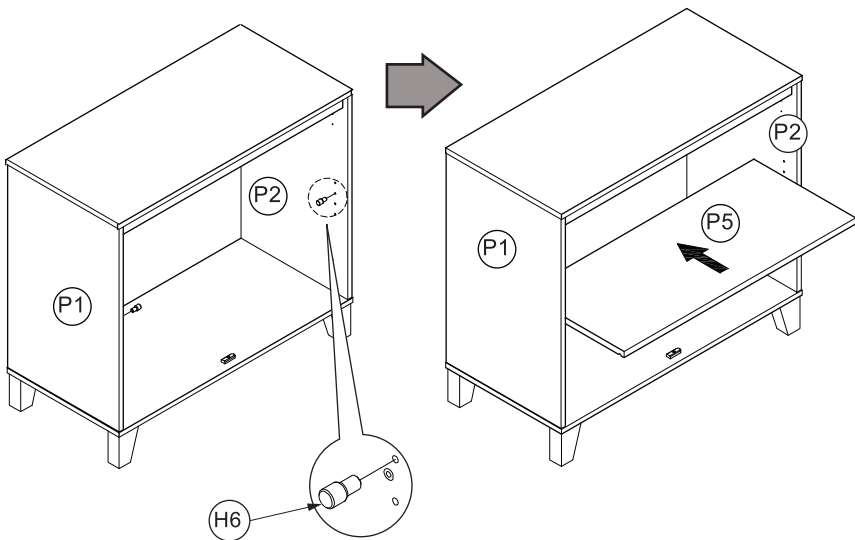
STEP 4



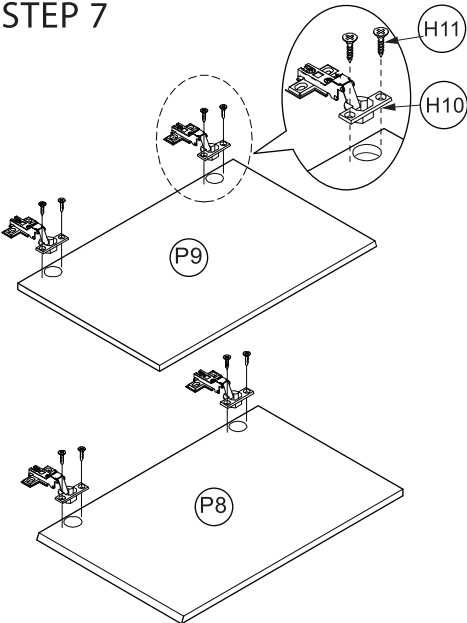
STEP 5



STEP 6



STEP 7



STEP 8 Door assembly.

