

ASSEMBLY INSTRUCTIONS

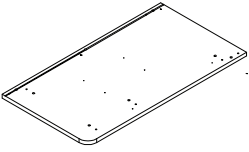
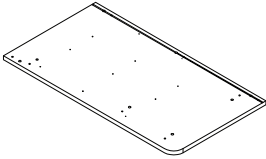
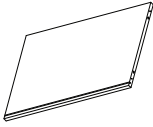



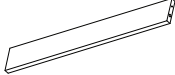
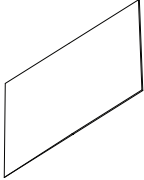
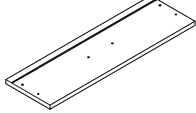
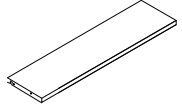
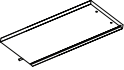

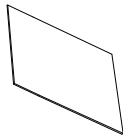
MODEL #B8337 CHEST



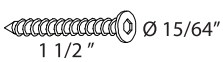
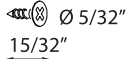
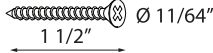

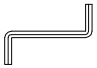
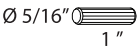
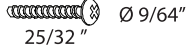
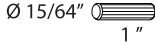

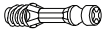


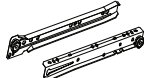
NOTE TO CUSTOMERS:

- For ease and speed of assembly we recommend that before you commence each step of the assembly that you identify all the parts required to complete that step.
- We recommend that where possible you allow sufficient space to assemble the item as close as possible to the place where it will be once assembled.
- For the protection of your furniture we recommend that the product is placed on a dry, soft, smooth and clean surfaces during assembly to prevent any damage. Avoid damp and direct sunlight.
- During assembly do not over tighten the screws or bolts, as this may damage the product.
- Please ensure you retain all the product packaging until the item is completely assembled.
- Periodically check all fitting and re-tighten as necessary.
- Never allow any liquids to remain on your furniture as absorption can cause the wood to warp or finish to de-laminate.
- It is recommended that this item should be assembled by two adults.

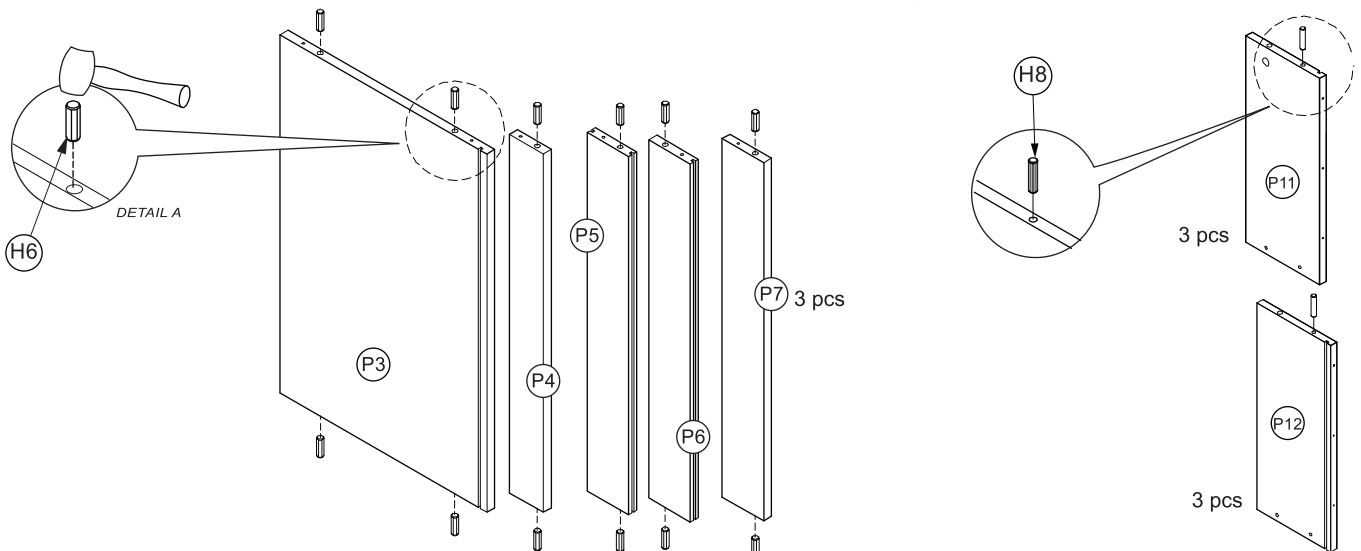
PARTS IDENTIFICATION

P1 Quantity: 1  Side Panel-Left	P2 Quantity: 1  Side Panel-Right	P3 Quantity: 1  Top Panel	P4 Quantity: 1  Back Top Rail	P5 Quantity: 1  Back Middle Rail
P6 Quantity: 1  Back Bottom Rail	P7 Quantity: 3  Front Rail	P8 Quantity: 2  Back Panel	P9 Quantity: 3  Drawer Front	P10 Quantity: 3  Drawer Back
P11 Quantity: 3  Drawer Side- Left	P12 Quantity: 3  Drawer Side-Right	P13 Quantity: 3  Drawer Base		

HARDWARE LIST

H1 Flat Head Screw m6 x 40mm  Quantity: 16 pcs	H2 Screw m4 x 12mm  Quantity: 36 pcs	H3 Screw #9 x 1 1/2"  Quantity: 12 pcs	H4 Leg Stud  Quantity: 4 pcs	H5 Allen Key  Quantity: 1 pc
H6 Wooden Dowel m8 x 25mm  Quantity: 16 pcs	H7 Pan Head Screw #6 x 20mm  Quantity: 6 pcs	H8 Wooden Dowel m6 x 25mm  Quantity: 6 pcs	H9 Cam Lock 12/9.5mm  Quantity: 6 pcs	H10 Connecting Bolts  Quantity: 6 pcs
H11 Sticker  Quantity: 16 pcs	H12 Pull Handle  Quantity: 3 pcs	H13 Drawer Slider  Quantity: 3 sets		

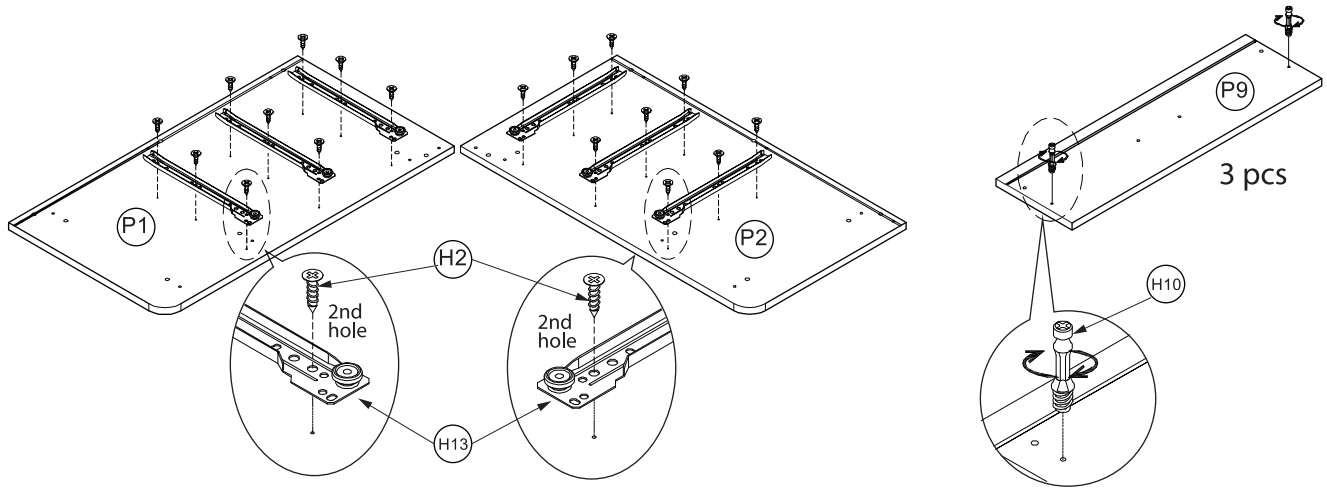
STEP 1 *insert wooden dowels (H6) & (H8) into the following parts respectively.*



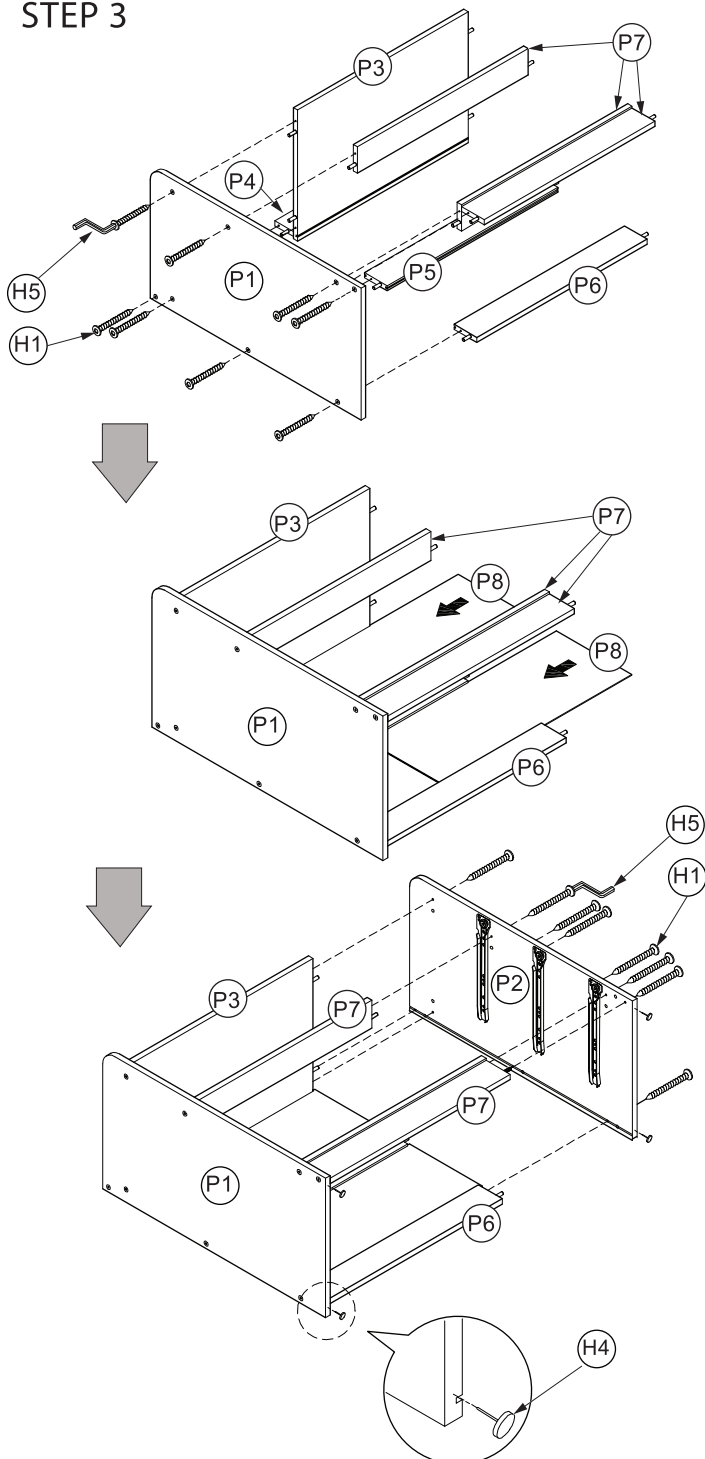
ASSEMBLY INSTRUCTIONS

ITEM #B8337 CHEST

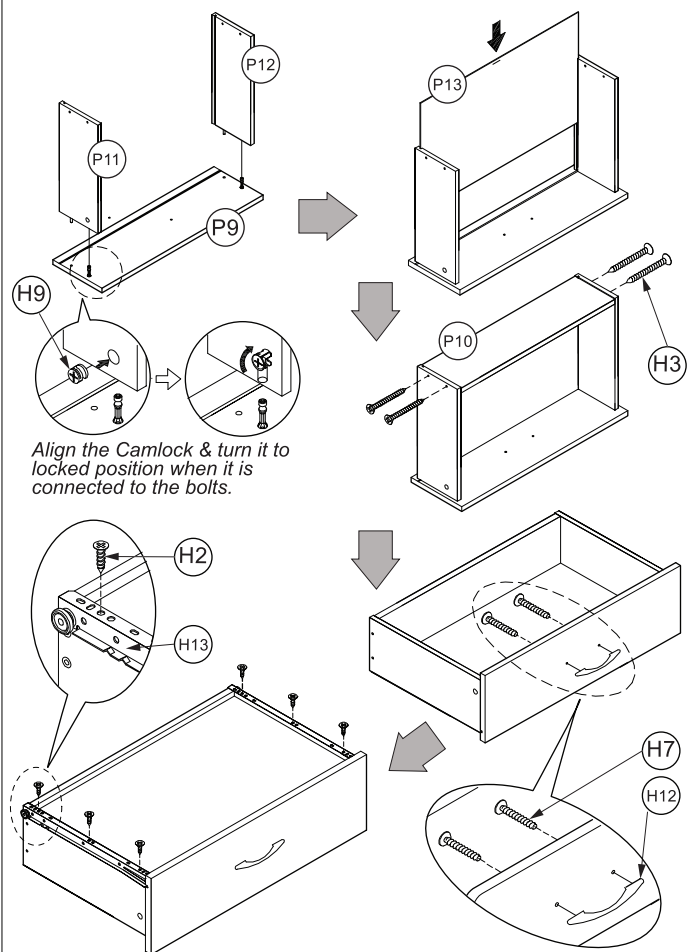
STEP 2 *install the hardware into the following parts respectively.*



STEP 3



STEP 4 *Drawer assembly.*



STEP 5

